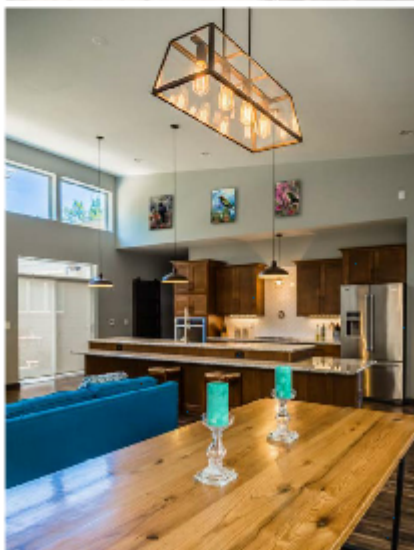
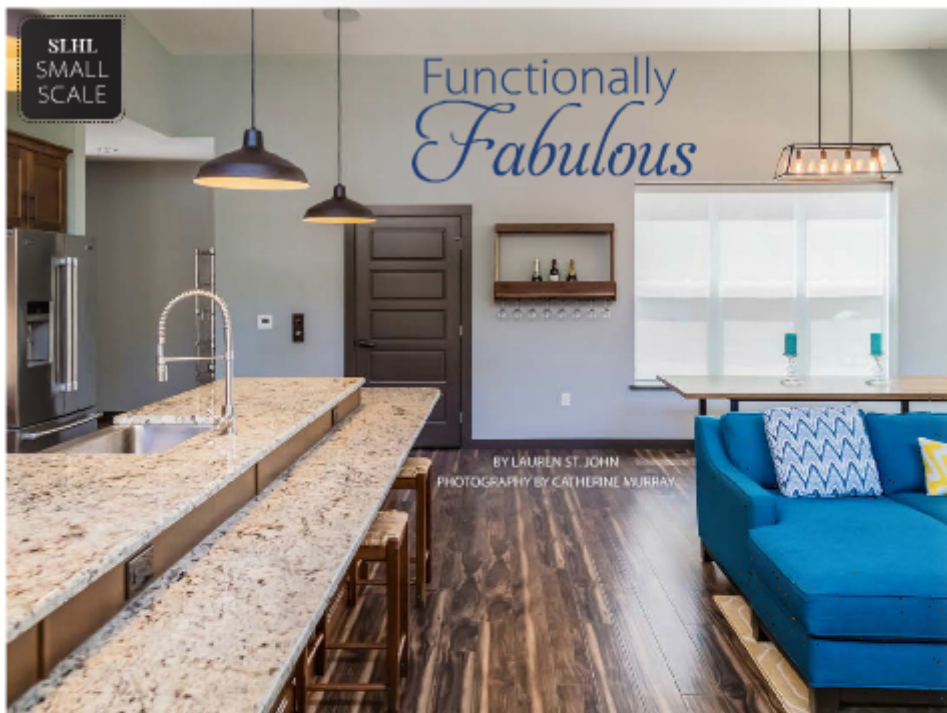


## Benton Park infill featured <sup>[1]</sup>

<sup>[1]</sup>  
Written by admin    02 May    Category:



*Purposefully crafted, this custom-designed home blends elements of old and new style.*

Nestled in the heart of the historic Benton Park Neighborhood, Jessi and Jamie Hatfield's one-story rebuild effortlessly exudes the celebrated character of the home's distinct locale. After taking one look inside, however, it's obvious that the couple's custom-designed standout is anything but expected.

Tired of noisy, cramped apartment living, the homeowners started their search for a functionally fabulous home in the city but quickly realized that what they desired would have to be built from the ground up. "Anything accessible that we found lacked style, so we knew that the only way to have equal parts of both was to start from scratch," explains Jessi. With a clear vision in mind, the pair teamed up with Mike Killeen of Killeen Studio Architects and Scott Vogel of Grand Home Solutions to transform four vacant lots into a stunning space that met their unique needs while still echoing the community's local legacy.

Focused on putting a stylish spin on universal design, a spacious, open concept provides ample room for entertaining and highlights the warehouse-inspired home's modern architecture and eclectic details. A window-lined, grand sloping roof lets in natural light to brighten the adjoining kitchen and living room, further complementing the cozy, industrial décor. Rustic, pendant light fixtures hover over a large, three-tier granite island, and white subway tiles pop against the weathered wood cabinetry, which is tailored to a convenient custom height. Comfortable

<sup>[2]</sup>

St. Louis Homes and Lifestyles <sup>[3]</sup> magazine has released their May 2016 edition and "Factory-Style New Construction"

[4] was featured!

Killeen Studio extends a big thank you to the publication.

This project was a collaboration with Grand Home Solutions [5].

To view the digital version, click here [2].

To subscribe to St. Louis Homes and Lifestyles, click here [6].

---

**Source URL:** <https://killeenstudio.com/benton-park-infill-featured>

#### **Links**

[1] <https://killeenstudio.com/benton-park-infill-featured>

[2] [https://issuu.com/sosterloh/docs/isuee\\_0516](https://issuu.com/sosterloh/docs/isuee_0516)

[3] <http://www.stlouishomesmag.com/>

[4] <http://killeenstudio.com/projects/factory-style-new-construction>

[5] <http://grandhomesolutionsinc.com/>

[6] <http://www.stlouishomesmag.com/content/subscribe>